

Faso Danse Théâtre  
Gabrielle Petitstraat 4/9  
1080 Brussels  
[www.fasodansetheatre.com](http://www.fasodansetheatre.com)



# Africa

# Simply the Best

Technical rider 24/03/2024

## Contact:

General:  
[Info@fasodansetheatre.com](mailto:Info@fasodansetheatre.com)

Technical:  
Herman Coulibaly  
[herman.coulibaly@gmail.com](mailto:herman.coulibaly@gmail.com)

This document is an integral part of the contract and should be read carefully. It outlines the most ideal environment for staging a performance of Faso. We request that any additions or variations to these specifications need to be discussed with Faso. This rider is suitable for performances staged in a theatre space.

## Crew & Staffing

### Light engineer/Stage manager:

Hermann Coulibaly

### *Theatre provides*

#### crew

- 1 x qualified lighting technician
- 1 x sound/video technicians
- 2 x stage technician
- 1 x dresser

At least one member of each crew has to be fluent in English or French, otherwise an interpreter has to be added to the team.

## Times

Load in and set up	+/- 6 hours.	
Spacing	+/- 3 hours	
Show	+/- 1h15min	
	BANBALI 100 FIN (KADIDJA TIEMATA)	25min
	LA QUATRIEME ( KOFFI KEGOU)	20min
	CHUTTE PERPETUELLE (AZIZ ZOUNDI )	30min
Load Out	+/- 1 hours.	

The load out takes place immediately after the last performance.

## Staging

The stage should be clean and tidy.

All irrelevant equipment: Stage towers, acoustic panels, acoustic towers, cabinets, lighting stock or anything else has to be removed.

Please reserve the necessary time to prepare the stage before our arrival.

During the show there will be changeovers and cleaning.

Dimensions

Optimal stage depth: 8m

Optimal free stage width: 10m

Minimal free stage height: 7m

## Set

*Theatre provides*

side masking

wooden stage floor

a completely empty and clean stage

the necessary fly bars to hang both set and lights

Good quality black dance floor

4 terracotta bricks

Wooden box 45cm x 45cm

Costume rack

*Faso Danse provides*

White backdrop

String curtain 4m high 8m wide

## Video

*Theatre provides*

PANASONIC PT-RZ120 projector or similar

Necessary optic for a 8m x 4,5m image on the back curtain

Ethernet connection from the projector to the control booth

HDMI or SDI cable from the projector to the control booth

## Sound

*Theatre provides*

Good quality mixing desk

FOH system with full coverage of the venue

4 monitors on stand in the corners of the stage

*Faso Danse provides*

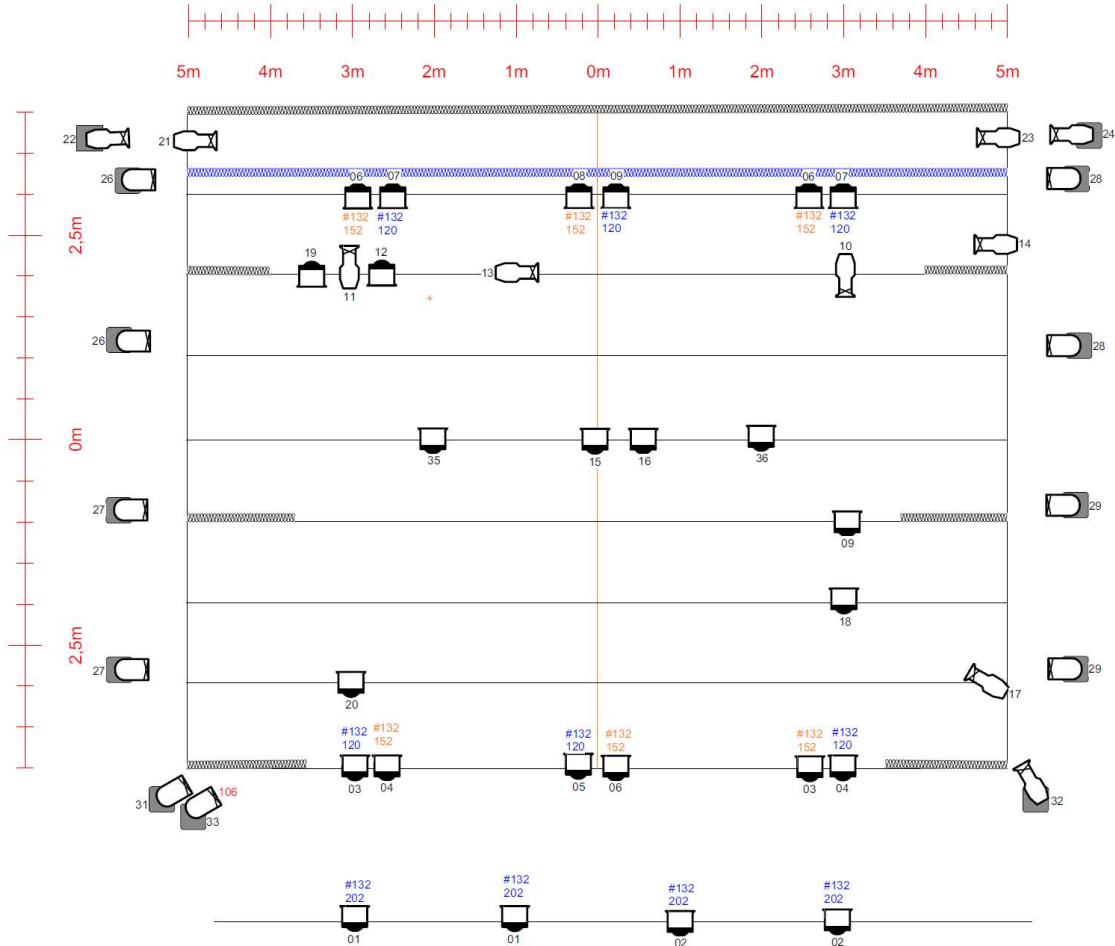
Computer for sound/video

# Lighting

Theatre provides

ETC Gio Lighting console

Lighting fixtures and colorgels as in the lightplot



## Dressing rooms

Properly heated, clean and secure dressing rooms for 3 dancers  
Dressing rooms include mirrors, tables, chairs and sufficient lighting.

The rooms must be lockable.

1 large towel per person a day

3 clothing racks for costumes

General power outlets

Access to a toilet and a shower backstage

2 litres of flat mineral water per person per day

Access to a freezer and ice

## Wardrobe

washing machine

dryer

iron and ironing board

1 dresser will be needed to wash and dry and iron all the costumes after the costume rehearsal and shows. The costume must be ready at least 2 hours before the start of the show.

It might happen that some costumes need some repair, this will also be one of the dresser's tasks.

The day of the general rehearsal and showdays around 15.00h, there should be some snacks and drinks available for the 3 dancers:

- Fruits
- Nuts
- dried raisins
- chips
- crackers
- cheese cubes (like Babybel)
- humus or some other spread
- chocolate bars
- energy bars
- water
- coffee, cream, sugar
- Tea
- Coca-cola
- Fruit juice