



ARTARA

Technical rider : Sylvia

Fabrice Murgia

VERSION : 2021/01/15

CONTACT:

Technical Director: Caponio Giacinto

Mobile +32 498 658730

Email: g.caponio@artara.be

Stage Manager: Girard Hugues

Mobile +32 484 62 68 58

Email: girard.hugues@gmail.com

Tour Manager: Virginie Demilier

Email: v.demilier@artara.be

Website: www.artara.be

I. Preamble

You will find here notified the ideal conditions for receiving our show “Sylvia”. This technical rider aims to provide you with the technical information we have been able to establish today. Once the contact made between the venue and our company, we will adapt the rider according to your venue. If we deem it necessary, we will do a technical inspection. In this rider, you will get a list of the equipment we provide as well as the one you have to provide. Do not hesitate to contact us for any further information.

The rider is part of the contractual agreement between the organizer and Artara.

This means that the organizer must comply, at its own initiative and at its own expense, all technical requirements (equipment and personnel). Exceptions may only be made in writing and signed by both parties.

From the moment a performance is considered, the organizer or his technical director must provide the stage manager of the company with the following information:

- a) The plan (top view and section) of the theater, with the indication of lighting positions. This plan should provide enough information to determine the horizontal and vertical angles of vision.
- b) A detailed plan and description of the orchestra pit dimensions, size (please inform us if a part of the orchestra pit is covered)
- c) A complete list of all the lighting equipment, sound and other. From this information, specific adaptations might be negotiated.

The organizer may never claim ignorance or unavailability of one of the demands, since he will give immediately this rider to his technical director and will await the advice of both parties before signing any contracts and / or confirm execution. If one or the other technical demand seems to be problematic, the technical director of the theater immediately contacts the technical director of Artara.

II. Duration

Show length is 90 minutes.

III. Stage

A pre set-up light equipment is necessary.

The dimensions written here bellow are the ideal conditions for the show. An adaptation is possible for smaller venues and it will be done based on stage plans.

Minimum Condition	Stage	Portal	Ideal Condition	Stage	Portal
Width	16m	14m	Width	20m	18m
Depth	12m		Depth	16m	
Height	9m	7m	Height	16m	9m

For the smaller venue, only the company can approve the possibility of adaptation. If necessary, we will make a technical visit.

Floor: a completely empty flat and clean stage with a minimum resistance of 500 kg / m²

We have many "tape" marks to stick and all the scenography elements are mobile and heavy. A water supply with the possibility of regulating the temperature is necessary on the stage to fill a pool during the show, through a pipe of sufficient length to go to the left side of the stage.

Four cigarettes: 3 at 20 minutes from the beginning and 1 at 80 minutes from the beginning are smoked on stage. We also use a tablespoon of fire paste in a protected container.

Grid: a motor hoist is essential to lift a quarter-grand piano at 2m60 unless the flying bar can support the weight of the piano. It is also possible to install the piano on the module from the stage to the orchestra pit if it is manoeuvrable and can accommodate the module (2m60 h x 3m20 x 3m20). This piano will be installed on the module at the end of the morning of D-1 to allow it to be tuned during the meal break.

Description of the sets:

- 1 silver pleated curtain 6m h x 20m w
- 2 mobile square modules on opera wheels (turtle) of 3m20 with platform for musicians at 2m60:

- a module includes the light and video control board on the stage and 3 musicians above. This module is connected by cable (sound, light and video) from the backstage.

- the other module has a dressing space on the stage and the singer and piano (without cover) at the top. This module is connected by cable (sound, light and video) from backstage through track.

These 2 modules are particularly heavy.

- 1 module with spiral stairs of 2m60 h (top of the access door at 4m90) 3m60 L x 2m45 l
- 1 mobile straight staircase 3m80 h x 4m20 L x 1m10 l
- 4 mobile walls 2m60 h, weighted by counterweight bars: 8 x 12 kg per wall
- 6 aluminium structure frames with wall dimensions allowing them to be covered differently, stored on steel trolleys
- 1 large mobile floor on casters of 3m60 L x 3m10 W
- 1 small mobile floor on casters of 3m L x 2m30 W
- 1 pool decorated with vegetation on the small floor, this pool is filled during the show.
- 1 screen 2m60 h x 6m L suspended at 4m90 (bottom of the screen) in polystyrene covered with video projection paper on aluminium structure, this screen must be manoeuvrable during the performance and is destroyed at the end of the performance by the actresses
- 1 mobile door
- different pieces of furniture: a stove, 5 tables, a bed, a "dentist's" chair, several chairs and stools, an armchair, a double metal locker, several sails and accessories with hook systems, several fake plants, several carpets, one toilet...

The venue has to provide:

- 1 garden hose of sufficient length to fill a water basin
- 32 stage weight of 12kg (rectangular format easy to strap)
- 1 top masking of 2m60 h x 6m L
- 4 riser 2 m L x 1m W x 0.8m H
- 1 costume stand

If grill under 12m high: 1 double track with central opening of 12m of rail with control wire for our silver plated curtains

Note: At the end of the show, the screen made of polystyrene and paper should be discarded because it has been destroyed.

It is recommended to anticipate garbage bags to sort paper, polystyrene and a waste bin.

We need two stage technicians who will be scheduled for rehearsals and the show. They will have to have black pants, a top will be provided, they are therefore "costumed".

IV. The venue

A. Desks :

The light and video control desks are on stage in the "control room" module. We bring the necessary tables for these desk.

The sound and subtitles control rooms will be located in the central axis of the stage, at the same height as the audience and among it, in the middle of the stereo in order to allow a good overview and a good hearing of the show. The desk cannot be under a balcony or in the cabin. It is necessary to book places accordingly.

1 riser of 2m x 1m and 1 riser of 1m x 1m will be sufficient for sound and subtitles control.

One of our actors will be seated in the theatre, please book him a place with a ticket as he will be entering with the audience. It is essential that this place is located near the stage (3rd or 4th row) on the right side. We need a direct access from the audience to the stage.

B. Sound:

A pre-setup must be done.

The equipment installer will contact the company in order to review all technical data together to prevent/solve any problem before the company arrives.

INSTALLATION :

The Venue provide:

- Instrument :** 1 x Quarter-grand piano
- Sound board :** 1 x A&H Dlive C3500
1x rack CDM32 + 2x DX168 + 2 remote IP8 + cable
- FOH :** 1 x linearray d&b audiotechnik, adamson s10, kiva/kara l.acoustic
1 x cluster central mono d&b audiotechnik, adamson, kiva/kara l.acoustic
2 x sub bass d&b audiotechnik, adamson, kiva/kara l.acoustic (mono)
2 x in fill FOH on sub bass linked FOH
- Stage sound :** 2 x 12" ou 15" » back stage (envoi mono)
- Front Fill:** 3 x front fill mono d&b audiotechnik, adamson, kiva/kara l.acoustic **Plan**
- Surround :** 4 x 12" Surround for audience (stereo), directed to the ceiling
- Microphonie :** 5 x Shure SM58
2 x DI BSS
11 x microphone stand
2 x small microphone stand
XLR cable for 32 inputs
- Intercoms :** 8 x wireless intercoms on stage
4 x wired intercoms (2 on the audience desk et 2 on the stage desk)

Must be divided in 2 channels : chan A : 6 wireless intercoms ,
chan B : 2 wireless intercoms + 4 wired intercoms

We provide a kit of rechargeable batteries. Batteries will have to be provided by the venue if problems: AA 1.5 volts LR6, AAA 1.5 volts duracell, energizer, varta for repetition (general) and performances.

We provide:

Desk device :	1 x imac + Reaper
	1 x macbook pro + Qlab
	1x Eventide Space
Microphonie/IEM:	2 x Rack 6 HF Sennheiser EW100 E/R (12 en total) + deported antennas
	3 x Stand K&M for antenna
	2x Fischer Amps ALC 161 MKII AA 2850 MAh battery chargers (+ 64 batteries Fischer Amps AA - 2850 mAh)
	12 x MKE1 micro lavalier omni beige
	1 x DPA 4066 omni beige headset
	2x SKM 100-835 G3 handheld wireless microphones
	1x Helpinstill piano pickup Model 280/380 (no mixer)
	2 x Beyerdynamic M160 micros
	1x Beyerdynamic M88TG 2 x AEA N8 micros
	4 x DPA 4099 micros
	2 x Shure Beta58 micros
	1 x maintenance kit + skin adhesive
	4 x ew 300 IEM G3 Wireless Monitoring System + deported antennas
	4 x headphone Audio-Technica

PATCHLIST

MIXRACK STAGE LEFT

Inputs		
1	MIC HF Valérie (GAIN BODYPACK -30 DB)	C3500 Ch 01
2	MIC HF Clara (GAIN BODYPACK -30 DB)	C3500 Ch 02
3	MIC HF Solène (GAIN BODYPACK -30 DB)	C3500 Ch 03
4	MIC HF Vanessa (GAIN BODYPACK -30 DB)	C3500 Ch 04
5	MIC HF Vinora (GAIN BODYPACK -30 DB)	C3500 Ch 05
6	MIC HF Léone (GAIN BODYPACK -30 DB)	C3500 Ch 06
7	MIC HF Magalie (GAIN BODYPACK -30 DB)	C3500 Ch 07
8	MIC HF Scarlett (GAIN BODYPACK -30 DB)	C3500 Ch 08
9	MIC HF Ariane (GAIN BODYPACK -30 DB)	C3500 Ch 09
10	MIC HF Sax (GAIN BODYPACK -21 DB)	C3500 Ch 10
11	MIC HF Spare (GAIN BODYPACK -30 DB)	C3500 Ch 11
12	MIC HF VOX An SKM 835 2	C3500 Ch 44
Outputs		
1	IEM IN 1	
2	IEM IN 2	
3	IEM IN 3	
4	IEM IN 4	
5	IEM IN 5	
6	IEM IN 6	
7	IEM IN 7	
8	IEM IN 8	
9	FOH L	
10	FOH R	
11	CENTER	
12	SUB	
13	SURROUND L	
14	SURROUND R	
15	LOINTAIN STAGE	
16		

PATCH MODULE REGIE

Inputs		
1	KICK M88	C3500 Ch 17
2	SNARE DPA 4099	C3500 Ch 18
3	FLOORTOM DPA 4099	C3500 Ch 19
4	HIHAT M160	C3500 Ch 20
5	OVERHEAD N8	C3500 Ch 21
6	MICRO STUDIO SM58	C3500 Ch 11
7	CLARINET DPA4099 + Rolls mic ON/OFF switch	C3500 Ch 23
8	SAX DPA4099 + Rolls mic ON/OFF switch	C3500 Ch 24
9	GUITAR M160	C3500 Ch 25
10	VOX Koen SM58	C3500 Ch 14
11	VOX Casper SM58	C3500 Ch 15
12	VOX Hendrik SM58	C3500 Ch 16
13	MOTU OUT 1	C3500 Ch 27
14	MOTU OUT 2	C3500 Ch 28
15	MOTU OUT 3	C3500 Ch 29
16	MOTU OUT 4	C3500 Ch 30
Output		
1	retour lumière	

PATCH MODULE PIANO

Inputs

1	REALISTIC SYNTH L BSS DI -20dB	C3500 Ch 33
2	REALISTIC SYNTH R BSS DI -20dB	C3500 Ch 34
3	PIANO Helpinstill Bas	C3500 Ch 35
4	PIANO Helpinstill Mid	C3500 Ch 36
5	PIANO Helpinstill High	C3500 Ch 37
6	PIANO N8	C3500 Ch 38
7	VOX An Piano Beta58	C3500 Ch 40
8	TROMBONE Beta58	C3500 Ch 45

PATCH WAVES/DANTE CARD

Input/Output 01-54

Virtual Soundcheck

Input/Output 56-64

QLab (channel 49-60)

C. Light :

A pre-setup must be done.

The Venue provide:

- A table at least 3m long, installed as close as possible to the stage to charge the company's lighting equipment (batteries, LEDS and wifi equipment), powered by a 16 amp supply.

- 10 Profile Robert Juliat 1kw 614sx (18°- 32°)
- 23 Profile Robert Juliat 2kw 714 sx (15°-40°)
- 1 Profile Robert Juliat 2kw 713 sx (29°-50°)
- 1 Profile Robert Juliat 1kw 613 sx (29°-50°)
- 14 PC 1KW (+132# pour lentille claire) + volets
- 17 PC 2kw (+132# pour lentille claire) + volets
- 1 Fresnel 5KW (11.7° to 64.7°)
- 29 PAR64 1000W MFL CP62
- 10 ACP 1KW
- 1 smoke machine (type viper 2,6) with quick smoke liquid
- 1 redhead 800 watts
- 1 dimmer type Robert Juliat Digitour S6
- 1 Adapter 16A / 32A 2P+T P17 male 16A / P17 Femelle 32A (5 Broches)
- 1 out dmx at the portal left
- 1 out dmx at the portal right
- 1 in dmx at control room
- 1 in dmx at the portal
- 3 iris
- 2 adapter dmx 3 pins female et 5 pins male
- 2 adapter dmx 3 pins male et 5 pins female

FOCUS : Scaffold tower or GenieLift

All supplies must be provided by the venue.

Gels : - LEE : 135, 195, 201, 202, 205, 206, 223, 252

- ROSCO : #132, # 119

Others : Black Gaffer, black dance carpet tape, blackfoils et black aluminium tape. If needed: 20 batterie AA 1.5V

We provide :

- 1 x Ma lighting Dot2 XI-F

D.Vidéo:

We provide all the video equipment.

It is important that you indicate the possibilities of hanging the projector in the venue so that we can calculate the necessary focal length.

We provide:

- 1 x Projector 12000 lumen Digital Projection
- 1 x lens Standard
- 1 x lens wide angle
- 1 x lens 2.7-4
- 1 x lens 4-7
- 2 x Camera Panasonic AF101 + Batterie kit
- 2 x Camera Sony FS7 + Batterie kit
- 2 x lens Lumix 35-100 mm 2.8
- 2 x lens Nikon 24-70 mm 2.8
- 2 x camera shoulder kit
- 1 x crane Libec 501 + Fluid head + counterweight
- 1 x gimbal Ronin 2
- 1 x lens remote wireless Nucleus M
- 2 x wireless kit TERADEK Bolt 500
- 1 x wireless kit TERADEK Bolt 1st Gen Trépied Manfrotto
- 1 x Magic Arm Manfrotto
- 2 x cable RJ45 100M
- 1x cable SDI 100M
- 3 x Monitor 24 pouces
- 1 x Monitor 8 pouces
- 2 x Monitor Black Magic Dual Screen
- 2 x Monitor Black Magic 27 pouces ultraHD
- 1x Mac Pro
- 2 x BlackMagic mini converter hdmi to sdi
- 2 x BlackMagic converter hdmi to sdi/ sdi to hdmi
- 1x Converter HDMI To RJ45 HdbaseT
- 1x Splitter Netgear RJ45 BlackMagic Lutbox
- 1x BlackMagicAtem 1 M/E Production Studio
- 1x BlackMagic control desk Atem
- Cable kit

V. Tour Team

22 people are touring with the show :

9 Actresses, 4 Musicians

1 Sound engineer, 1 Lighting technician , 1 Video technician, 2 Cameramen ,

2 Stage technician (1 Stage manager),

1 Tour administrator (subtitle during the performance), 1 Artistic referent (director or artistic assistant)

VI. Dressing Room

Dressing rooms (with key) near the stage with toilets, showers and towels (hot water available all day) will be accessible to the company (not accessible to the public). A snack (including fresh fruit, dried fruit, small sandwiches, biscuits, chocolate, water, fruit juices and hot drinks) for 22 people will be organized before the general and performances. The organiser will ensure that it is replenished throughout the duration of the stay. A technical room will be provided for the stock of cameras and valuable equipment during meal breaks and at night.

VIII. Internet

Wi-fi internet connection will be available to the company. When connecting via the network venue, the company will receive the password on arrival.

IX. Transportation and parking

Provide a safe place for a trailer truck. This site will be free from the arrival of the company and available until it's departure.

X. Dresser

We tour without a dresser. It is necessary that a dresser from the venue is present for the cleaning. He/She will take care of the cleaning, drying, ironing and, eventually, the sewing. The clothes must be ready (washed, dried and ironed) no later than 2 hours before each performance. It is essential that the costumes are dry and tidy (no cleaning to be planned) after dismantling (2 h) after the last performance. We tour with more or less 45 costumes from the year 50/60's, almost all of them have to go through a dry cleaning service. In addition, we bring about fifty pairs of shoes, please provide a shoe-repair service if necessary.

XI. Set up, dismantling and venue's staff

We have detailed the skills needed and the number of people needed for the tasks that have been performed. You are free to organize these teams according to your inner workings. We need 10 people to unload and carry our equipment on stage.

All staff will remain until the truck is closed, even in the event of a delay.

D-2 : In the morning, pre-set up by the theatre.

In the afternoon, the truck and the technical team arrive.

Unloading and set-up in 2 shifts

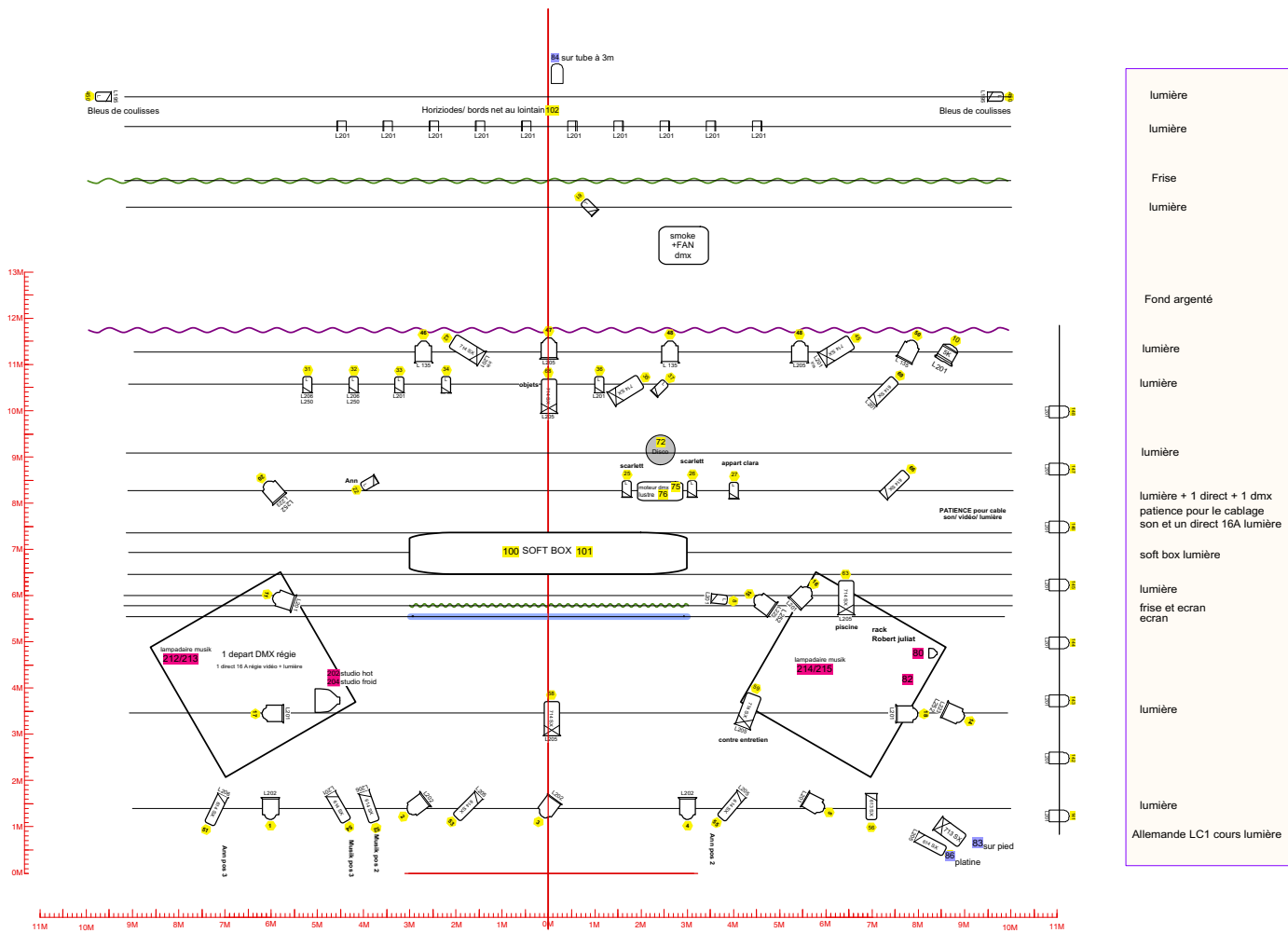
D-1 : Set up in 3 shifts

D-0 : End of set-up + rehearsal + performance

The dismantling and loading of the truck follow the last performance.

XII. Contact

Technical direction	Caponio Giacinto	+32 498 65 85 30	g.caponio@artara.be
Stage Manager	Hugues Girard	+32 484 62 68 58	girard.hugues@gmail.com
Stage technician	Aurélie Perret	+32 474 95 93 85	aurele.perret@gmail.com
Light technician	Emily Brassier	+32 493 19 34 34	emily.brassier@gmail.com
Sound engineer	Bob Hermans	+32 498 54 49 26	bobstudioparis@gmail.com
Video technician	Dimitri Petrovic	+32 477 72 65 62	dimitri.petrovic@yahoo.com



"SYLVIA"
Cie ARTARA

PLAN GENERIQUE
SOUIS A ADPATATION

création: Giacinto Caponio
g.caponio@artara.be
régie Lumière: Emily Brassier
emily.brassier@gmail.com

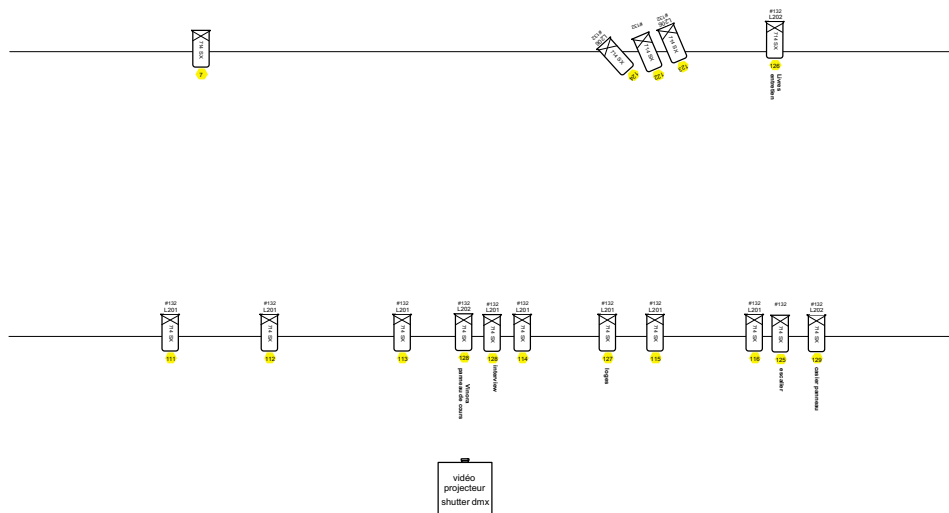
Lumière à fournir:
prévoir du Rosco 132 pour les PC en lentilles claires

Echelle: 1/100

Gels: Lee 135, 195, 201, 202, 205, 206, 223, 252, Rosco 132, 119

000 circuits au grill
000 circuits au sol
000 circuits compagnie

14	PC 1KW avec volets
17	PC 2KW avec volets
10	Robert Juliat 614 SX
1	Robert Juliat 613 SX
23	Robert Juliat 714 SX
1	Robert Juliat 713 SX
29	Par 64 CP 62
1	Fresnel 5 KW avec volets
10	Cyclodes
1	mandarines avec volets
1	Pied manfrotto
1	Machine à fumée +ventilateur



XIII. Planning

Schedule	Task	Stage	Light	Video	Sound	Dresser
D-2						
14h00 - 16h00	Unloading	6	3	1	1	1
16h00 - 18h00	Unloading - Set up	6	3	1	1	1
18h00 - 19h00	Pause					
19h00 - 23h00	Set up	6	3	1	1	1
D-1						
9h00 - 12h30	Set up	6	4	1	1	
11h30	Arrival of the piano					
12h30 - 14h00	Pause - Shifted for sound Piano tuning				1	
14h00 - 16h00	Set up	6	4	1	1	1
16h00 - 18h00	Set up	6	4	1	1	1
18h00 - 19h00	Pause - Shifted for sound				1	
19h00 - 23h00	Light Focus	3	3			
D-0						
9h00 - 10h00	Light Focus	3	3			
10h00-11h00	Light - Sound - video	3	3		1	
11h00 - 12h30	Sound check - video	3	3		1	
12h30 - 14h00	Pause					
14h00 - 15h00	Sound - Vidéo				1	
15h00 - 18h00	Technical Rehearsal	3	2		1	
18h00 - 19h00	Pause					
19h00 - 20h00	Pre set	3	2		1	
20h00 - 21h30	Show 1	3	2		1	1
D+1						
9h00 - 18h00	Entretien Costume					1
18h00 - 20h00	Pre set	3	2	1		
20h00 - 21h30	Show 2	3	2	1		1
21h45 - 4h00	Dismantling - load	6	4	1	1	1