



ARTARA

Technical Rider : THE LAST NIGHT OF THE WORLD 'LA DERNIERE NUIT DU MONDE'

Fabrice Murgia

VERSION 1 : 02/10/2021

CONTACT:

Technical Direction: Caponio Giacinto
Mobile +32 498 658730 / Email: g.caponio@artara.be

Stage Manager: Defrise Marc
Mobile +32 497 53 91 95 / Email: marcdefrise@gmail.com

Cie ARTARA
Email: v.leroy@artara.be / Website: www.artara.be

Tour Manager
Email: info@fransbrood.com / Website: www.fransbrood.com



I. Preamble

You will find here notified the ideal conditions for receiving our show " La dernière nuit du monde". This technical rider aims to provide you with the technical information we have been able to establish today. Once the contact has been made between the venue and our company, we will adapt the rider according to your venue. Should it be necessary, we will do a technical inspection (at your expense). In this rider, you will get a list of the equipment we provide as well as the one you have to provide. Do not hesitate to contact us for any further information.

The rider is part of the contractual agreement between the organizer and Artara.

This means that the organizer must comply, at its own initiative and at its own expense, all technical requirements (equipment and personnel). Exceptions may only be made in writing and signed by both parties.

From the moment a performance is considered, the organizer or his technical director must provide the stage manager of the company with the following information:

- a) The plan (top view and section) of the theater, with the indication of lighting positions. This plan should provide enough information to determine the horizontal and vertical angles of vision.
- b) A detailed plan and description of the orchestra pit dimensions, size (please inform us if a part of the orchestra pit is covered)
- c) A complete list of all the lighting equipment, sound and other. From this information, specific adaptations might be negotiated.

The organizer may never claim ignorance or unavailability of one of the demands, since he will give immediately this rider to his technical director and will await the advice of both parties before signing any contracts and / or confirm execution. If one or the other technical demand seems to be problematic, the technical director of the theater immediately contacts the technical director of Artara.

II. Duration

Show length is 80 minutes.

III. Stage

A pre set-up light equipment is necessary.

The dimensions written here bellow are the ideal conditions for the show. An adaptation is possible for smaller venues and it will be done based on stage plans.

Minimum Condition	Stage	Portal	Ideal Condition	Stage	Portal
Width	14M	12M	Width	16M	14M
Depth	8M		Depth	10M	
Height	7M	6M	Height	9M	7M

For the smaller venue, only the company can approve the possibility of adaptation. If necessary, we will make a technical visit.

Floor: a completely empty flat and clean stage with a minimum resistance of 500 kg / m²

The scenography is composed of :

A white carpet covered by a thin layer of white Teflon snow on the entire stage area.

A 3m x 3m LED screen placed in the center of the stage at +/- 5m from the front stage. This screen is placed on a structure supported by two weighted legs allowing it to be raised 50 cm from the ground, the whole weighs 600kg.

A first platform of 4,78m x 2,78m x 8cm takes place in front of this screen, this one is shifted towards the stage right, a LED strip finishes its periphery.

A second platform with the same finishes but with the dimensions of 4.78m x 1.98m takes place at the back of the screen and shifted towards the stage left, a LED strip finishes its periphery.

Two low stools

IV. The venue

Sound:

A pre-setup must be done.

The equipment installer will contact the company in order to review all technical data together to prevent/solve any problem before the company arrives.

Sound control must be placed in the center in the venue.

The Venue provide:

FOH :	1 x foh linearray d&b audiotechnik, adamson s10, kiva/kara l.acoustic
	1 x cluster central mono d&b audiotechnik, adamson, kiva/kara l.acoustic
	2 x sub bass d&b audiotechnik, adamson, kiva/kara l.acoustic (mono)
	2 x in fill FOH sur sub bass linked FOH
Front Fill :	3 x front fill mono d&b audiotechnik, adamson, kiva/kara l.acoustic (Front stage)
Side :	4 x 12" Surround in the venue (stereo),
Stage monitor :	2 x 12 XT on stand (1,50m) left/right stage
Interphonie :	2 x interphonies wired (one for control desk and one on stage)
Mic stand :	3 x mic stand (1 with round base)

We provide:

Sound desk :	1x A&H Dlive C3500 + carte DANTE + 1x rack CDM32 + câblages
Desk control :	1x macbook pro + ableton Live 1x korg mini fader
Microphone :	1x Rack 6 HF Sennheiser EW100 E/R + Antennes déportées 2x DPA 4060-OC-C-F00 beige avec dad 6034 2x DPA 4060-OC-C-C00 brun avec dad 6034 1x SKM 100-835 G3 1x Electro-voice RE20 + pince 1x SM beta 58

We provide a kit of rechargeable batteries. Batteries will have to be provided by the venue if problems: AA 1.5 volts LR6, AAA 1.5 volts duracell, energizer, varta for repetition (general) and performances.

IN

mixrack		
1	HF1	Gabor
2	HF2	Gabor spare
3	HF3	Lou
4	HF4	/
5	HF5	/
6	HF6	/
7	RE20	round stand
8	spare	/
dlive		
1		
2		
3		
4		
5		
6	talkback	table stand
dante/dvs		
1/2	mac stereo	mac son
3/4	ableton 1	nuît
5/6	ableton 2	nature
7/8	ableton 3	ville
9/10	ableton 4	vent
11/12	ableton 5	cloche
13/14	ableton 6	melodie
15/16	ableton 7	rythme
17/18	ableton 8	beat
19/20	return 1	reverb
21/22	return 2	delay
22/23	return 3	retour
23/24	spare	/
25/26	ableton 9	voix off

OUT

mixrack		
1	left	
2	right	
3	centre	
4	sub	
5	surround left	
6	surround right	
7	monitor jardin	retour Gabor
8	monitor lou	retour Lou

C. Light :

A pre-setup must be done.

The Venue provide:

- 19x Profile Robert Juliat 2kw 714 sx (15°-40°)
- 6x PC 1KW (+132# pour lentille claire) + volets
- 16x PAR64 1000W MFL CP62
- 1x PAR36 (F1)
- 1x Mic stand
- 2x Hazer machine (type LOOKSOLUTION UNIQUE2) with smoke liquid in sufficient quantity
- 2x small fan on dimmable circuit
- 2x 5 pin DMX start from the control room : universe 1-> dimmer, universe 2 LED + moving light.
- 1 x direct 16A on the floor, behind our LED screen.

FOCUS : GenieLift

All supplies must be provided by the venue.

Gels : - LEE : 200, 201, 228, 281, 710
 - ROSCO : #132, # 119

Others : Black Gaffer, black dance carpet tape, white Gaffer, white dance carpet tape, blackfoils et black aluminium tape.

We provide :

3 x Maverick FORCE 2 Profile
2 x Led strip (platform on stage) with cabled dimmer
1 x Ma lighting Grandma2 wing
1 x Ma lighting Grandma2 fader pack
1 x computer with Grandma2 on pc
1 x computer screen

D. Vidéo:

The Venue provide:

2x separate 16A power supply for the led screen
1x SDI cable kit 2-5m (SPARE)

We provide:

36x led screen 500mmx500mm outdoor P3.9mm SMD1919,
16Bits+ (Encapsulation transparent), IP65, 4500cd/m²
carte de réception nova
(dimension écran led 3m x 3m) + spare
1x scaler Nova V4Xs
1x camera AW-HE40
1x remote AW-RP50
1x Mac Pro + clavier + souris
1x écran ordinateur
1x MacBook Pro pour surtitrage
2x BlackMagic converter hdmi to sdi
1x BlackMagic ultrastudio mini recorder
1x radial USB pro
1x switch ethernet
2x écran de retour vidéo IN/OUT SDI
2x flight case avec opticalCON fibre vers BlackMagic optical converter to SDI + 1 liaison Ethernet
1x enrouleur avec fibre 100m MTP 12 way OM3
2x câbles HDMI/HDMI 2m
1x câble HDMI /DVI
7x câbles SDI 3m
4x câbles ethernet 5m
50x câbles ethernet 1m
50x câbles truecon F/M 1m
3x câbles truecon F/F 1m
3x câbles truecon M/M 1m
1x kit câbles ordinateur

V. Tour Team

7 people are touring with the show :

2 Actors,

1 Sound engineer, 1 Lighting technician, 1 Video technician, 1 Stage manager,

1 Tour administrator (subtitles during the performance),

VI. Dressing Room

Dressing rooms (with key) near the stage with toilets, showers and towels (hot water available all day) will be accessible to the company (not accessible to the public). A snack (including fresh fruit, dried fruit, small sandwiches, biscuits, chocolate, water, fruit juices and hot drinks) for 7 people will be organized before the general and performances. The organiser will ensure that it is replenished throughout the duration of the stay. A technical room will be provided for the stock of cameras and valuable equipment during meal breaks and at night.

VIII. Internet

Wi-fi internet connection will be available to the company. When connecting via the network venue, the company will receive the password on arrival.

IX. Transportation and parking

Provide a safe place for a trailer truck. This site will be free from the company's arrival and will stay available until its departure.

X. Dresser

We tour without a dresser. It is necessary that a dresser from the venue is available for the cleaning. He/She will take care of the cleaning, drying, ironing and, eventually, the sewing. The clothes must be ready (washed, dried and ironed) no later than 2 hours before each performance. It is essential that the costumes are dry and tidy (no cleaning to be planned) after dismantling (2 h) after the last performance.

XI. Set up, dismantling and venue's staff

We have detailed the skills needed and the number of people needed for the tasks that have been performed. You are free to organize these teams according to your inner workings. We need 10 people to unload and carry our equipment on stage.

All staff will remain until the truck is closed, even in the event of a delay.

D-2 : Pre-set up by the theatre.

D-1 : The truck and the technical team arrive.

Unloading and set-up in 3 shifts

D-0 : End of set-up + rehearsal + performance

The dismantling and loading of the truck follow the last performance.

XII. Contact

Technical direction and Video technician	Caponio Giacinto	+32 498 65 85 30	g.caponio@artara.be
Stage Manager	Defrise Marc	+32 497 53 91 95	marcdefrise@gmail.com
Light technician	Emily Brassier	+32 493 19 34 34	emily.brassier@gmail.com
Sound engineer	Célia Naver or Beuselinck Brecht	+32 476 97 47 91 +32 472 36 24 92	celia.naver@gmail.com brechtbeuselinck@mac.com

XIII. Planning

WITHOUT PRE SETUP						
Schedule	Tâches	Plateau	Lumière	Vidéo	Son	Habilleuse
J-1						
09h-12h30	Unloading / Set up	5	3	1	1	
14h-18h	Set up / Light Focus	5	3	1	1	If needed
18 h - 19h	Pause - Shifted for sound				1	
19h-22h	Light Focus / Light Intensity		2			
J-0						
9h – 12h30	Video and Light check	1	1			
14h-18h	Technical Rehearsal	1	1		1	
20h30-22h00	Show 1	1	1		1	
J+1						
Matin	Costume maintenance					1
17h - 18h	Pre set	1	1		1	
18 h - 19h	Pause					
20h30 - 22h00	Show 2	1	1		1	
22h15 - 0h30	Dismantling - load	5	3	1	1	

WITH PRE SETUP						
J-0						
9h – 12h30	Unloading / Set up / Light Focus	5	3	1	1	
12h30-14h	Pause - Shifted for sound				1	
14h-18h	Light Focus / Light Intensity	2	3	1	1	
20h30-22h00	Show 1	1	1		1	

La dernière nuit Costume



Fabrice
+ 2 pochettes Hicco
Chemise 30°
trus les jours
→ ceinture
Pantalon
nettoyage à sec
1x semaine
→ lavage
idem

Chaussettes.

+
Séjourneur
Blanc

→ Chaussures

La dernière nuit

Costumes Nancy / Nadine

+ pochette Mieu



→ Deux robes
laver tous les
3 jours 30°

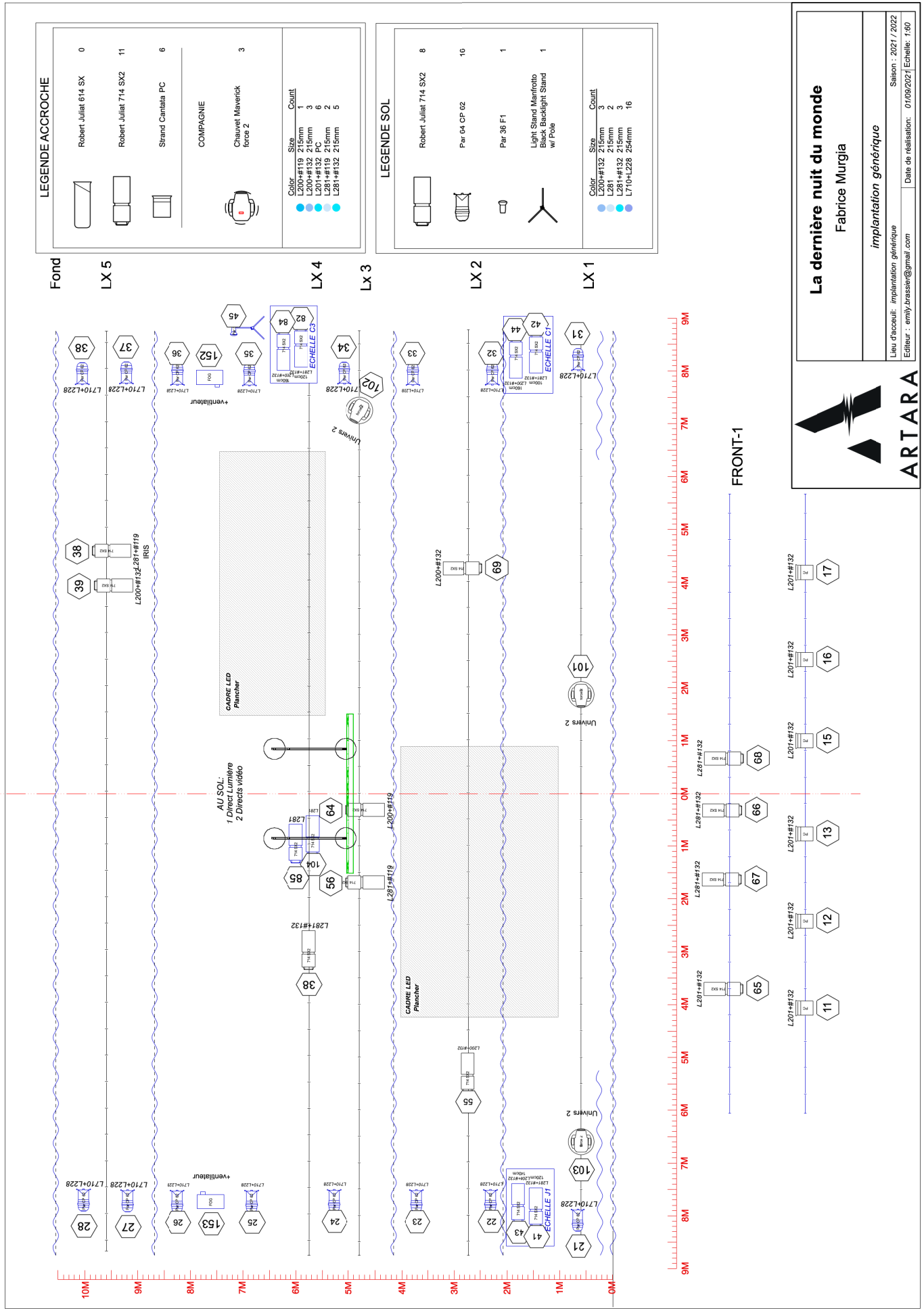
Deux Baigneaux wAx
30°

→ Cape Perle Neiges
laver.

+ sous vêtements
NADINE (culottes +
soutiens)

Nancy (culottes
noire)
chaus.

→ Veste non portée



La dernière nuit du monde

Fabrice Murgia

implantation générique

Lieu d'accueil: implantation générique
 Editeur: emily.brassier@gmail.com
 Saison: 2021 / 2022
 Date de réalisation: 07/09/2021 Echelle: 1:60