

Not/
Standing
/Alexander
Vantournhout
/

every_body

TECHNICAL RIDER

version 1.1

19th of January 2026



© Bart Grietens

Technical Coordination

Bram Vandeghinste

+32 485 75 09 53

bram@notstanding.com

Tourmanagement

Kiki Verschueren

+32 483 68 65 13

kiki@notstanding.com

Tour Planning

Flore Roggeman

+32 9 234 12 12

flore@fransbrood.com

Janne Coonen

+32 471 62 28 61

janne@notstanding.com

This technical rider is fully part of the contract. Adjustments (due to specific features of the venue) can only be made in negotiation with the company.

not/
standing
/alexander
vantournhout
/

General info

- Team on tour
Touring members (5 to 7 people in total)
A detailed list will be sent to you well in advance by our tour manager

Performers - 2 persons
Emmi Väisänen & Alexander Vantournhout
or
Charlotte Cétaire & Chia-Hung Chung

Technical crew - 2 persons

Tourmanager - 1 person

Choreographer / rehearsal director - 1 person

Staff - 1 person
Company manager, communication manager or distribution manager
- Duration of the performance
55 minutes - no intermission - no latecomers are allowed
- Stage
proscenium stage and frontal audience

IMPORTANT

Due to the specific nature of the scenography, this performance can only perform in venues equipped with **moveable flybars or trusses**

- Stage Dimensions
min. 10m wide x 10m deep
min. height of the flybars: 6.5m
- Recommended age
adult/12+

The company requests that all current technical documentation for the proposed venue is sent by email to the technical coordinator (bram@notstanding.com) as soon as possible:

- a. architectural drawings (pdf and dwg if available) including section and plan views
- b. stage plan
- c. pictures of the venue
- d. standard lighting plot
- e. inventory of lighting equipment
- f. inventory of sound equipment
- g. local regulations (sound levels, fire codes, curfews etc)
- h. seating layout

Typical Schedule

This schedule is based on a performance starting at 20h00 (8 PM), which is not always the case.

This is for reference only, exact schedule per venue will be sent by our techical coordinator, in accordance with the technical team of the venue.

not/
standing
/alexander
vantournhout
/

| Day | Time | Activity | Venue Crew | | | Company Crew |
|-------------------------------------|-----------|---|------------|-------|-------|--------------|
| | | | Lights | Audio | Stage | |
| D-2 Travel Tech | | Technical crew travels | | | | 2 |
| D-1 Travel Cast + Setup | ... | Performers + tourmanagement travels | | | | |
| | 9h | Load-out + Get-In | 1 | | 2 | 2 |
| | 09h30-13h | Setup set + rigging lights | 1 | | 2 | 2 |
| | 13h-14h | Lunch | | | | |
| | 14h-17h | Focus Lights | 2 | | 1 | 2 |
| | 17h-18h | Setup sound + soundcheck | 1 | 1 | 1 | 2 |
| D Setup + Show | 10h-13h | Continue technical setup | 1 | 1 | 1 | 2 |
| | 13h-14h | Lunch | | | | |
| | 14h-16h | Finish technical setup | 1 | 1 | 1 | 2 |
| | 16h-17h | Rehearsals on stage | 1 | 1 | 1 | 2 |
| | 17h-18h | Stage Cleaning | | | 2 | |
| | 17h-18h | Diner for performers and crew | | | | |
| | 18h-20h | Prepare for performance on stage | | | 1 | 2 |
| | 20h-20h55 | SHOW 1 | | | 1 | 2 |
| | 21h-23h | Strike + load-in (in case of no extra show) | 1 | 1 | 2 | 2 |
| D+1 Extra Show- days | 15h30 | Get-in technical crew | | | 1 | 2 |
| | 16h-17h | Performers warmup on stage | | | 1 | 2 |
| | 17h-18h | Stage cleaning | | | 1 | |
| | 17h-18h | Dinner for performers and crew | | | | |
| | 18h-20h | Prepare for performance on stage | | | | 2 |
| | 20h-20h55 | SHOW +1 | | | 1 | 2 |
| | 21h-23h | Strike + load-in (in case of no extra show) | 1 | 1 | 2 | 2 |

Depending on the location and planning:

| | | | | | | |
|---------------------|--|-----------------|--|--|--|---|
| Day after last show | | Company departs | | | | 2 |
|---------------------|--|-----------------|--|--|--|---|

Important notes:

- > According to the needs of the company this tour schedule may change, f.e. a general rehearsal on D-1.
- > Rehearsals are private, unless otherwise agreed with the company. Please always inform the communication manager (kiki@notstanding.com) about press requests or requests from local photographers/videographers.
- > No admission can be guaranteed without confirmation by our communication manager.
- > All technicians should be familiar with their technical equipment and their venue.

1. Stage

- Frontal stage is needed. No audience on the sides.
- The use of your black backdrop, borders and legs will be discussed in advance for your venue, please provide us pictures of the empty stage.
- **The stage will be completely covered and taped in black dance carpet BEFORE arrival of the company.**
- A hard, flat, solid floor in good condition. No soft surface underneath.
- The performance requires absolute silence in the auditorium.
- Performing on an inclined stage is possible, if the inclination does not surpass 3%. To be discussed well in advance with our technical coordinator.

Theatre provides:

- › 80kg counterweight on stage left (cour)
- › 1x A-frame ladder (working height 3m)

Company provides:

- › 2x Showtex Showpipe rail (9,4m wide) with motors controlled by DMX, all necessary cabling from controller to motors
- › 2x 3m aluminium drop bar (6m wide in total) + all rigging to attach to a flybar
- › 2x motor (5-pin DMX 512 + 220V) to spin 2 bars
- › 110x Showtex Slitdrapes strings of different length to be attached on flybars
- › 1x Porta Gantry portable lifting system (total weight 150 kg)
- › 1x treadmill (5-pin DMX 512 + 220V)
- › 1x wooden table
- › 1x three-seater bench

IMPORTANT

our Slitdrapes are transported in **a large wooden box on 6 wheels.**

dimensions of the box:

height: 180 cm
width: 86 cm
length: 260 cm

this box needs to be ON STAGE during setup and breakdown. If not possible, please let us know well in advance, to find a suitable alternative

- Our Showtex slitdrapes are Class 1 flame retardant. More information can be found here:
<https://www.showtex.com/sites/default/files/attachments/6530-slitdrape-tds-showtex.pdf>

2. Lights

It is of utmost importance that any disturbing or disctracting light e.g. led lights from machinery, emergency lighting, reflective areas like metal borders or shiny elemements are removed or covered. For security reasons, think well in advance of a suitable replacement or make a correct risk-analysis.

Theatre provides:

- › All the fixtures, barndoors and gels indicated on the lightplot (see attached lightplot)
- › A minimum of 30 dimmers 2,5kW
- › All necessary safety cables to secure a clean and safe hookup
- › House lights on dimmer, to be controlled from control booth
- › 1x Tripod to rig 2x PAR 64 (minimum height: 3m)

fixtures:

- 5x Profile 2kW WIDE 30°-54°
- 4x Profile 1kW wide 38°-57°
- 3x PAR 64 CP 62
- 3x PAR 64 CP61
- 2x PAR 64 CP60
- 5x ACP (cycloid) 1kW

gels:

please provide fresh and unburnt gels!

- 3x LEE 202 Profile 2kW
- 2x LEE 174 Profile 2kW
- 5x ROSCO 119 Profile 2kW
- 2x LEE 138 Profile 1kW
- 2x ROSCO 114 Profile 1kW
- 3x LEE 174 PAR 64
- 1x LEE 711 PAR 64
- 5x LEE 224 ACP (cycloid) 1kW

Company provides:

- › 2x Ayrton Levante S LED Profile
- › 1x Ayrton Levante TC LED Profile
- › 6x fluorescent lights in aluminium housing attached to Porta Gantry (5-pin DMX 512 + 220V)
- › 6x fluorescent lights in aluminium housing on the ground, covered by own black dance carpet (5-pin DMX 512 + 220V)
- › 2X HQI 400W with clamps and safety cable
- › 4x PAR 20 pinspot on floor
- › Macbook Pro with D::Light software as lighting console
- › Korg NanoKontrol MIDI controller
- › Enttec DMX USB Pro (2 universes DMX 512)

Our typical setup consists of 2 universes of DMX 512:

- universe 1 : house dimmers
- universe 2: show channels for company (moving heads, motors, fluorescents,...)

Although we prefer to use 2 universes on pshysical 5-pin DMX connectors to control the lights, we can also use sAcn or Artnet, if necessary.

3. Sound

Theatre provides:

- A professional quality sound system with sufficient power to suit the venue, to be configured as L/R + SUB (mono).
- The system should be fully operational upon the arrival of our technical crew.
- Our crew should have all-time acces to all amps and processors necessary for the show.
- 2 x min. 12" mono wedges to be positioned on the floor, both 5 meters off centre upstage left and right.
- 2 x min. 12" mono wedges as surround on tripod in the venue, to be positioned left and right corner behind the last row of the audience.
- A quality digital mixing console (Allen & Heath, Yamaha, Midas, Digico,...) with a minimum of 12 inputs and 8 outputs.
- A stereo mini-jack connection at mixing desk.

Company provides:

- MacBook Pro with Qlab 4 software
- ESI U186 XT soundcard
- jack-xlr cables from soundcard to mixing desk

mixing desk routing

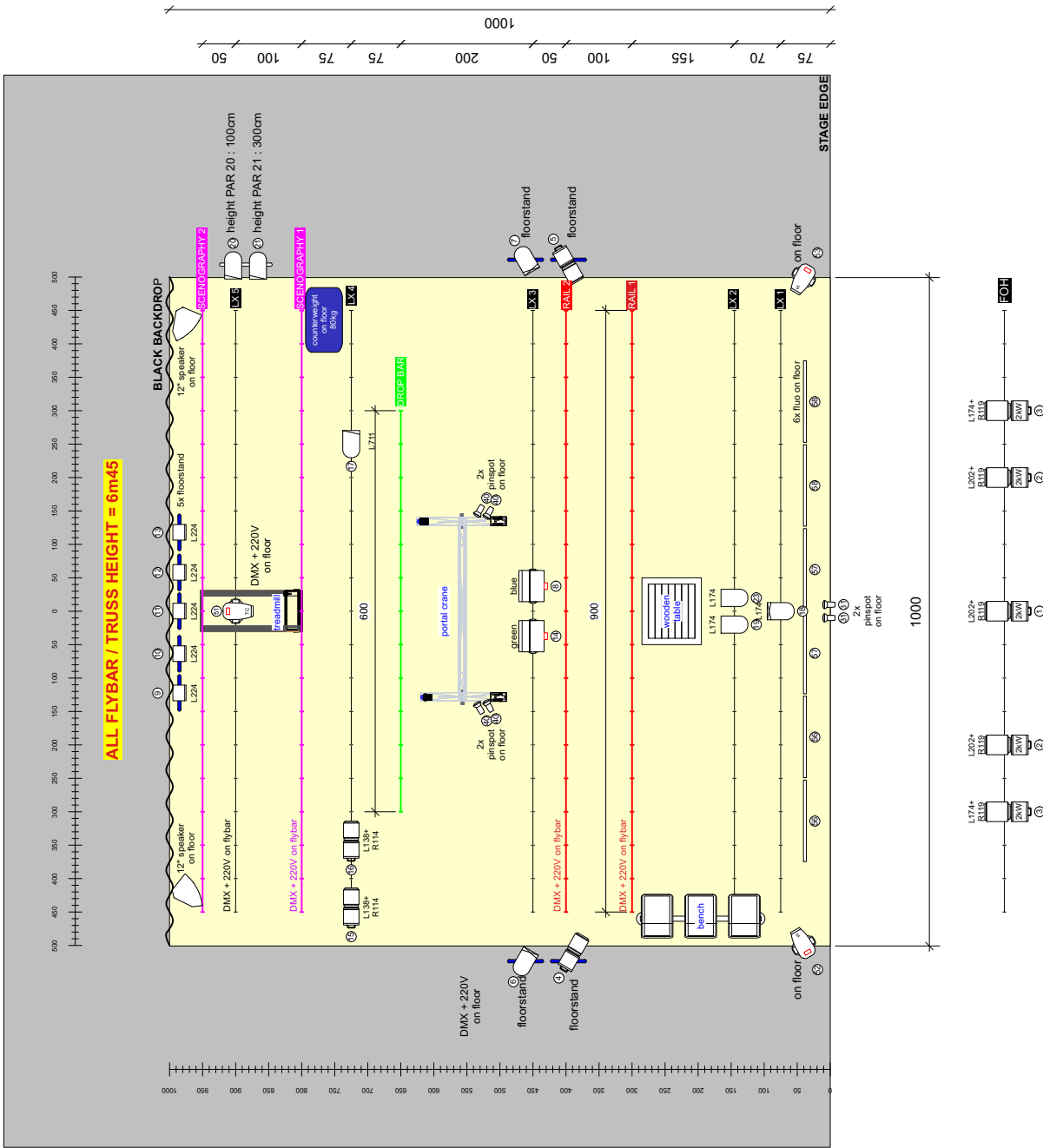
| input | routing |
|-----------|----------------|
| channel 1 | FOH Left |
| channel 2 | FOH Right |
| channel 3 | Upstage Left |
| channel 4 | Upstage Right |
| channel 5 | Surround Left |
| channel 6 | Surround Right |

all inputs are sent POST-FADE to AUX-busses

| | | |
|--|--------------------------|---|
| | Profile 2kW WIDE 30°-54° | 5 |
| | Profile 1kW WIDE 38°-57° | 4 |
| | PAR64 CP60 | 2 |
| | PAR64 CP61 | 3 |
| | PAR64 CP62 | 3 |
| | ACP (Cycloid) 1kW | 5 |
| | HQL by Cie | 2 |
| | Ayrton Levante S by Cie | 2 |
| | Ayrton Levante TC by Cie | 1 |
| | Fluo by Cie | 6 |
| | Pinspot by Cie | 6 |

lightdesign by Bert Van Dijk
drawn by Bram Vandeghinste
version November 25th 2024

4. Lightplot



5. Transport

- Our set is transported by a VW Crafter (L3H3) transporter van with Belgian license plate 2-BNB-182. Dimensions of the transporter van are 5986mm (L) x 2427mm (W) x 2590mm (H).
- Our crew travels either with a Renault Trafic passenger van with Belgian license plate 2-DDT-229, or by train or plane, according to the touring schedule. Dimensions of the passenger van are 5480mm (L) x 1956mm (W) x 1974mm (H). Our tour manager will contact you well in advance with the details.
- 2 parking spaces for above vehicles should be provided, free of charge, as close to the venue as possible.

6. Music

All music, composed for the performance, is by Belgian artist Geoffrey Burton.

tracklist:

- | | |
|-------------|--------|
| ▪ Treadmill | 11m52s |
| ▪ Table | 8m45s |
| ▪ Bench | 2m59s |
| ▪ Hanging | 9m14s |
| ▪ Snakearms | 14m34s |

7. Others

7.1 Dressing rooms

- A minimum of 2 clean and spacious rooms for 2 artists with clearly lit mirrors.
- Minimum temperature for the dressing rooms is 21°C. Please provide an extra (electric) heater if needed.
- Showers with cold and warm water and 4 big and fresh towels.
- Easy acces to toilets (not shared with the audience).
- A clothing rack and 8 coat hangers.
- Fresh drinking water, fruits and nuts are much appreciated. Our crew and cast bring their own reusable water flasks, so no need to provide plastic bottles.
- Please provide some ice packs nearby, in case of emergency. Preferable fresh ice.
- Please provide a contact of a doctor/physiotherapist that we could reach out for, during the time of our visit at your theatre/festival, in case of emergency.

7.2 Catering

- Lunch and dinner for 5-7 people or perdiems according to the official rate. Please note that special diets, intolerances and allergies will be communicated to your team by our tour manager (kiki@notstanding.com or janne@notstanding.com).

7.3 Preparation before the show

- After dinner, the artists will start warming up on stage. During this time until 10 minutes before the show, we ask for complete silence on stage and in the auditorium.
- Ideal temperature on stage is 21°C.

7.4 Costumes

- We kindly ask for acces to a washing machine and a drying rack.
- We take care of the costumes ourselves and therefore we don't need a dresser before, or after the show. Nevertheless, it would be very helpful if you could provide us with the contact information of someone who knows how to sew or repair a button (in case of emergency).

If any of these requirements cannot be made,
please let us know well in advance.
We will get to you in order to sort it out together.

contact:

bram@notstanding.com