

Not/  
Standing  
/Alexander  
Vantournhout  
/

# Through The Grapevine Live

TECHNICAL RIDER

version 1.2

9th of April 2026



© Bart Grietens

## Technical Director

**Bram Vandeghinste**  
+32 485 75 09 53  
[bram@notstanding.com](mailto:bram@notstanding.com)

## Tourmanagement

**Kiki Verschueren**  
+32 483 68 65 13  
[kiki@notstanding.com](mailto:kiki@notstanding.com)

## Tour Planning

**Flore Roggeman**  
+32 9 234 12 12  
[flore@fransbrood.com](mailto:flore@fransbrood.com)

**Janne Coonen**  
+32 471 62 28 61  
[janne@notstanding.com](mailto:janne@notstanding.com)

This technical rider is **fully** part of the contract.  
Adjustments (due to specific features of the venue)  
can only be made in negotiation with the company.

### General info

- **Team on tour**
  - Touring members (6 to 8 people in total)  
A detailed list will be sent to you well in advance by our tour manager
  - Performers - 2 people  
Axel Guérin & Alexander Vantourhout
  - Musician - 1 person  
Andrea Belfi
  - Technical crew - 2 people
  - Tourmanager - 1 person
  - Staff - max. 2 people  
Company manager, communication manager or distribution manager
- **Duration of the performance**
  - 55 minutes
  - no intermission
  - no latecomers are allowed
  - no encores possible
- **Stage**
  - proscenium stage and frontal audience
- **Stage Dimensions**
  - min. 12m wide by min. 11m deep
  - min. height of the flybars: 7.5m
- **Recommended age**
  - adult/12+

The company requests that all up to date technical documentation for the proposed venue is sent by email to the technical director ([bram@notstanding.com](mailto:bram@notstanding.com)) as soon as possible:

- a. architectural drawings (**pdf and dwg if available**) including section and plan views
- b. stage plan
- c. pictures of the venue (empty stage, stage floor, back wall)
- d. standard lighting plot
- e. inventory of lighting equipment
- f. inventory of sound equipment
- g. local regulations (sound levels, fire codes, curfews etc)
- h. seating layout

## Typical Schedule

This schedule is based on a performance starting at 20h00 (8 PM), which is not always the case.

**This is for reference only, exact schedule per venue will be sent by our technical director, in accordance with the technical team of the venue.**

Day	Time	Activity	Venue Crew			Company Crew
			Lights	Audio	Stage	
<b>D-2</b> Travel Tech		Technical crew travels				2
<b>D-1</b> Travel Cast + Setup	...	Performers + tourmanagement travels				
	9h	Load-out + Get-In	1		2	2
	09h30-13h	Setup set + rigging lights and sound	2	1	1	2
	13h-14h	Lunch				
	14h-17h	Focus Lights	2	1	1	2
	17h-18h	Setup sound + soundcheck	1	1	1	2
<b>D</b> Setup + Show	10h-13h	Continue technical setup	1	1	1	2
	13h-14h	Lunch				
	14h-16h	Finish technical setup	1	1	1	2
	16h-17h	Rehearsals on stage	1	1	1	2
	17h-18h	Stage Cleaning			2	
	17h-18h	Diner for performers and crew				
	18h-20h	Prepare for performance on stage			1	2
	20h-20h55	<b>SHOW 1</b>			1	2
21h-23h	Strike + load-in (in case of no extra show)	1	1	2	2	
<b>D+1</b> Extra Show- days	15h30	Get-in technical crew			1	2
	16h-17h	Performers warmup on stage			1	2
	17h-18h	Stage cleaning			1	
	17h-18h	Dinner for performers and crew				
	18h-20h	Prepare for performance on stage				2
	20h-20h55	<b>SHOW +1</b>			1	2
	21h-23h	Strike + load-in (in case of no extra show)	1	1	2	2

Depending on the location and planning:

Day after last show		Company departs				2
---------------------	--	-----------------	--	--	--	---

### Important notes:

- › **According to the needs of the company this tour schedule may change, f.e. a general rehearsal on D-1.**
- › All technicians should be familiar with their technical equipment and their venue.
- › Rehearsals are private, unless otherwise agreed with the company. Please always inform the communication manager ([kiki@notstanding.com](mailto:kiki@notstanding.com)) about press requests or requests from local photographers/videographers. No admission can be guaranteed without confirmation by our communication manager.

## 1. Stage

- Frontal stage is needed. No audience on the sides.
- The use of your black backdrop, borders and legs will be discussed in advance for your venue, please provide us pictures of the empty stage.
- **The stage will be completely covered and taped in black dance carpet BEFORE arrival of the company.** We put our underfloor and white marley floor on top of your black dance carpet.
- All irrelevant equipment (stage towers, acoustic panels, acoustic towers, cabinets, lighting stock or anything else) has to be removed before our arrival.
- The performance requires absolute silence in the auditorium.
- Performing on an inclined stage is possible, if the inclination does not surpass 3%. To be discussed well in advance with our technical director.

### Theatre provides:

- › a stage fully covered and taped in black dance carpet
- › 2x new and unused rolls of black dance carpet tape
- › 2x new and unused rolls of black aluminium tape

### Company provides:

- › 6 lanes of white vinyl marley floor (1,5m x 11,65m)  
Lanes are cut into a symmetrical trapezium  
Direction upstage towards downstage
- › 5 pieces of black vinyl marley floor  
Lanes are cut into a symmetrical trapezium  
To cover our white marley dance floor upstage  
Direction stage left towards stage right
- › 6 lanes of Vario Elastic underfloor (1,5m x 10,5m)  
Direction upstage towards downstage  
The underfloor fits underneath our entire white dance floor
- › grey and white dance carpet tape



© Bart Grietens

## 2. Lighting

It is of utmost importance that any disturbing or distracting light e.g. led lights from machinery, emergency lighting, reflective areas like metal borders or shiny elements are removed or covered.

For security reasons, think well in advance of a suitable replacement or make a correct risk-analysis.

### Theatre provides:

- › All the fixtures, barndoors and gels indicated on the lightplot (see attached lightplot)
- › All necessary dimmers (2,5kW) according to the lightplot
- › All necessary safety cables to secure a clean and safe hookup
- › House lights on dimmer, to be controlled from control booth
- › 2 new and unused rolls of black aluminium tape
- › One professional hazer (type DF-50) and one fan

#### fixtures:

-	9x	Profile 2kW <b>WIDE</b> 25°-50° (FOH position)
-	9x	Profile 1kW <b>WIDE</b> 25°-50°
-	1x	Profile 1kW 16°-35° (FOH position)
-	9x	PC 2kW
-	1x	PC 1kW
-	2x	PAR 64 CP 62
-	12x	PAR 64 CP61

#### gels and frosts/diffusers:

please provide fresh and unburnt gels!

-	1x	LEE 174	PC 1kW
-	3x	LEE 281	Profile 1kW
-	5x	LEE 281	Profile 2kW
-	6x	LEE 281	PC 2kW
-	1x	LEE 720	PAR 64
-	1x	LEE 228	Profile 1kW
-	2x	LEE 228	PAR 64
-	1x	ROSCO 114	PC 1kW
-	2x	ROSCO 114	Profile 1kW
-	12x	ROSCO 119	PAR 64
-	9x	ROSCO 119	PC 2kW
-	4x	ROSCO 119	Profile 1kW
-	3x	ROSCO 132	Profile 1kW
-	9x	ROSCO 132	Profile 2kW

### Company provides:

- › 1x Ayrton Levante TC LED Profile
- › 7x fluorescent lights in aluminium housing located downstage on stage floor, covered by own small black dance marley (5-pin DMX 512 + 220V)
- › 14x floorstand for all PAR cans
- › 2x Kvant ClubMax 6500 FB4 Laser
- › Macbook Pro with D::Light software as lighting console
- › Korg NanoKontrol MIDI controller
- › Enttec DMX USB Pro (2 universes DMX 512)

# 3. Lightplot

Not/  
Standing  
/Alexander  
Vantourhout

THROUGH  
THE  
GRAPEVINE  
LIVE

lightdesign by Caroline Mathieu  
adaptation by Bert Van Dieck

Scale 1:50

Technical Director

Bram Vandeghinste  
+32 (0) 485 750 963  
bram@notstanding.com

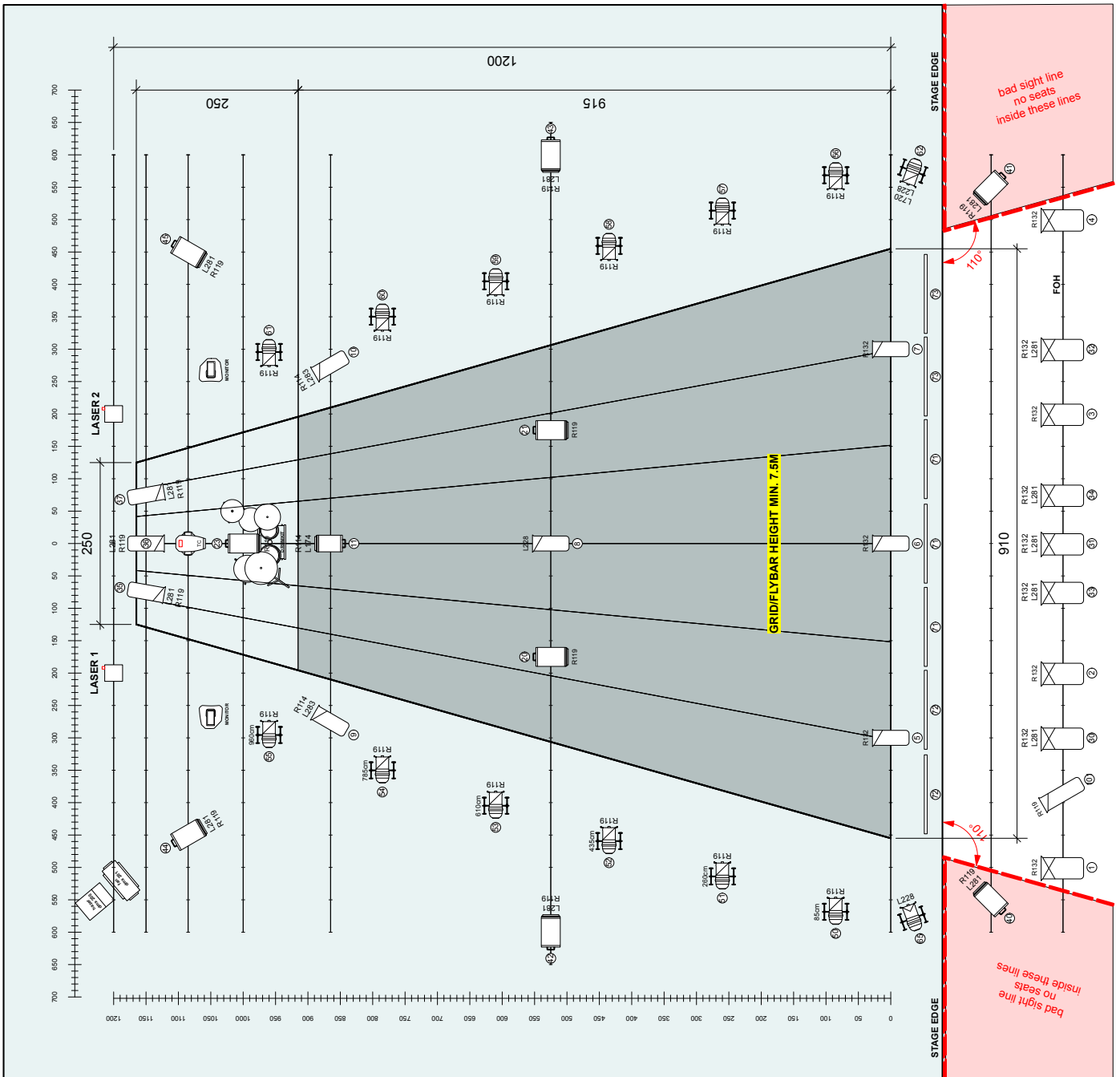
## LEGEND

	Profile 1kW 16°-35°	1
	Profile 1kW 25°-50°	9
	Profile 2kW 25°-50°	9
	PC 1kW	1
	PC 2kW	9
	PAR 64 CP62 MFL	1
	PAR 64 CP61 NSP	13
	Ayrton Levante by cie	1
	Fluorescent Tube by cie	7
	Kvant Clubmax 6500 FB4 laser by cie	2

Color	Size	Count
L174	PC 1kW	1
L281	Profile 1kW	3
L281	PC 2kW	6
L281	Profile 2kW	5
L281	PC 1kW	2
L281	PAR 64	1
Frost	Size	Count
L228	PAR 64	2
L228	Profile 1kW	1
R114	Profile 1kW	2
R114	PC 1kW	4
R119	Profile 1kW	4
R119	PC 2kW	9
R119	PAR 64	12
R132	Profile 2kW	9
R132	Profile 1kW	3

ALL PAR 64 ON FLOORSTANDS (FLOORSTANDS PROVIDED BY CIE)  
BLACK BOX (A L'ALLEMANDE)  
STAGE DIMENSIONS MIN 12M WIDE X 13M DEEP  
ALL MEASUREMENTS ON THE PLOT ARE IN CM



## **4. Sound**

During the show, there is one (1) musician on stage.

His instrumentarium consists of a full drumkit, combined with FX processing and loops.

The live audio will be processed throughout the venue in a spatial surround setup.

Therefore we will need a speaker setup with a number of speakers adapted to the venue.

### **Theatre provides:**

- › Minimum speaker setup:
  - A professional quality sound system with sufficient power to evenly cover the entire audience field, to be configured as L/R + CENTER + SUB (mono).
  - 2x min. 12" high quality full range speakers to be positioned frontstage left and right, monitoring for the performers.
  - 2x min. 10" high quality full range speakers to be positioned left and right in the venue, surround side left and right.
  - 2x min 10" high quality full range speakers to be positioned left and right, behind the last row of audience, surround back left and right.
  - extra speakers might be needed on each balcony level.
  - A quality digital mixing console (we prefer Allen&Heath dLive) with a minimum of 14 inputs and 14 outputs and, if possible, equipped with a DANTE connection.
  - A stereo mini-jack connection at mixing desk.
  - 3x small microphone stand with boom
  - 1x large microphone stand with boom
  - 1x 16ch XLR-snake from drum position to stagebox
  - all XLR cables and multi's
- › The system should be fully operational upon the arrival of our technical crew.
- › Our crew should have all-time acces to all amps and processors necessary for the show.
- › Mixing desk position should be located in the venue together with the lighting operator. Location to be on axis, in an acoustically preferable location. Not to be placed under a balcony or in a seperate control booth.

### **Company provides:**

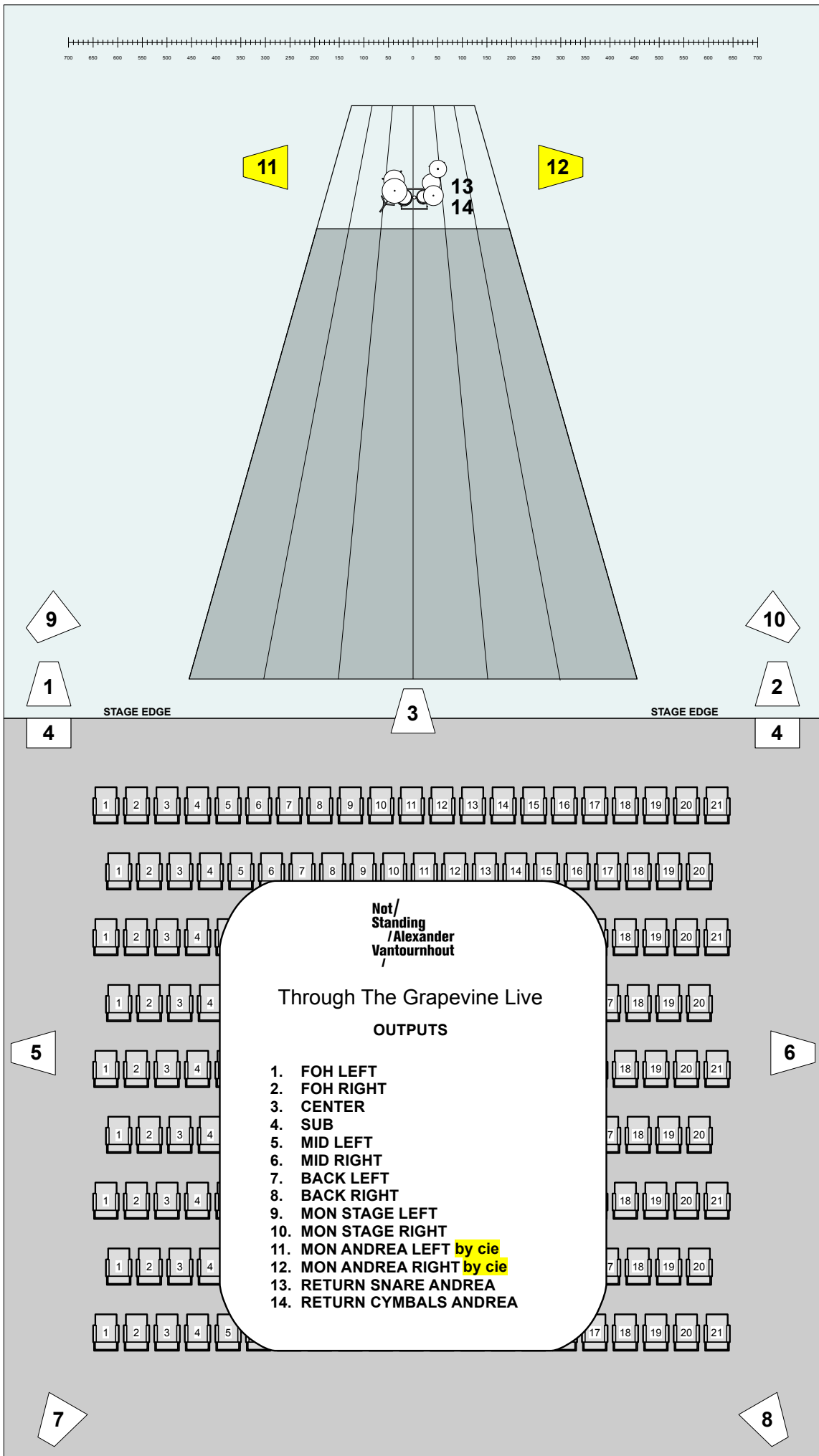
- › Mac Studio with SPAT Revolution software
- › Motu UltraLite Hybrid mk5 soundcard
- › all necessary microphones and DI's
- › 2x QSC K10.2 active speaker on stand as monitoring on stage for musician

For all audio related questions, please contact our audio engineer on tour:

**Jille Waegebaert** (NL, ENG)

mobile: + 32 479 60 31 25

mail: [info@8audio.be](mailto:info@8audio.be)



## 5. Backline

### Theatre provides:

- › One full drumkit:
  - Bass drum 22"
  - Floor tom 16"
  - Snare drum 14"

our preference kit is Ludwig Super Classic 1960's

IMPORTANT: All the batter heads should have coated drum heads.  
Preference for bass drum is Power Stroke 3 coated.  
Please let us know if there are different options.

Drumkit color should only be black, silver, (off)white or grey please.

- One crash ride cymbal (18" or 20", vintage jazz type)
- One pair of hi hat cymbals (14", vintage jazz type)
- One single bass drum kick pedal
- Two sturdy cymbal stands
- One snare drum stand
- One Hi Hat stand
- One percussion stand
- One computer stand
- One drumstool

Please sent a detailed list for your venue to [bram@notstanding.com](mailto:bram@notstanding.com)  
min. 2 months in advance, so we can verify the provided set.

### Company provides:

- › MacBook Pro with Ableton software
- › Motu UltraLite Hybrid mk5
- › MIDI controllers
- › FX pedals

## **6. Risk Analysis**

set elements fire risk	: none
effects	: no strobe lighting
open flame	: none
firearms	: none
smoke	: smoke and haze, please turn off smoke detection/alarm
hazardous/dangerous items	: 2 laser fixtures During the setup, the range off the lasers will be limited, so they can <u>never</u> reach the audience or devices with optical systems (camera's, video projectors, etc...) There is an emergency stop next to the lighting desk at the control booth.

## **7. Transport**

- Our set is transported by a VW Crafter (L3H3) transporter van with Belgian license plate 2-BNB-182 or 2-HES-244.  
Dimensions of the transporter van are 5986mm (L) x 2427mm (W) x 2590mm (H).
- Our crew travels either with a Renault Trafic passenger van with Belgian license plate 2-DDT-229, or by train or plane, according to the touring schedule.  
Dimensions of the passenger van are 5480mm (L) x 1956mm (W) x 1974mm (H).  
Our tour manager will contact you well in advance with the details.
- 2 parking spaces for above vehicles should be provided, free of charge, as close to the venue as possible.

## **8. Others**

### **8.1 Dressing rooms**

- A minimum of 3 clean and spacious rooms for 3 artists with clearly lit mirrors.
- Minimum temperature for the dressing rooms is 21°C.  
Please provide an extra (electric) heater if needed.
- Showers with cold and warm water and 6 big and fresh towels.
- Easy acces to toilets (not shared with the audience).
- A clothing rack and 8 coat hangers.
- Fresh drinking water, fruits and nuts are much appreciated.  
Our crew and cast bring their own reusable water flasks, so no need to provide plastic bottles.
- Please provide some ice packs nearby, in case of emergency. Preferable fresh ice.
- Please provide a contact of a doctor/physiotherapist that we could reach out for, during the time of our visit at your theatre/festival, in case of emergency.

### **8.2 Catering**

- Lunch and dinner for 6-8 people or perdiems according to the official rate.  
Please note that special diets, intolerances and allergies will be communicated to your team by our tour manager ([kiki@notstanding.com](mailto:kiki@notstanding.com) or [janne@notstanding.com](mailto:janne@notstanding.com)).

### 8.3 Preparation before the show

- After dinner, the artists will start warming up on stage. During this time until 10 minutes before the show, we ask for complete silence on stage and in the auditorium.
- Ideal temperature on stage is 21°C.

### 8.4 Costumes

- We kindly ask for access to a washing machine and a drying rack.
- We take care of the costumes ourselves and therefore we don't need a dresser before, or after the show. Nevertheless, it would be very helpful if you could provide us with the contact information of someone who knows how to sew or repair a button (in case of emergency).

### 8.5 Set List

- All music is played live by Andrea Belfi. All tracks are registered by SABAM.
  - › TTGV part 1 11'18"
  - › TTGV part 2 06'00"
  - › TTGV part 3 08'21"
  - › TTGV part 4 02'07"
  - › TTGV part 5 06'02"

If any of these requirements cannot be made,  
please let us know well in advance.  
We will get to you in order to sort it out together.

contact:

[bram@notstanding.com](mailto:bram@notstanding.com)